

SONG 20M POP 1 A POP CHORDS

Handwritten musical notation for a song, showing chords and measures. The notation is written on a staff with a treble clef and a key signature of two sharps (F# and C#). The time signature is 4/4.

The chords and measures are as follows:

- Measure 1: A
- Measure 2: F#-
- Measure 3: D
- Measure 4: E7
- Measure 5: A
- Measure 6: E7
- Measure 7: F#-
- Measure 8: D
- Measure 9: A
- Measure 10: F#-
- Measure 11: D
- Measure 12: E7
- Measure 13: A
- Measure 14: E7
- Measure 15: F#-
- Measure 16: D
- Measure 17: F#-
- Measure 18: B-
- Measure 19: C#
- Measure 20: F#-
- Measure 21: A
- Measure 22: D
- Measure 23: E
- Measure 24: A
- Measure 25: A
- Measure 26: D
- Measure 27: E
- Measure 28: A
- Measure 29: A
- Measure 30: D
- Measure 31: E
- Measure 32: A
- Measure 33: A
- Measure 34: END

SONG_20M_POP_1_C_POPCHORDS

Chord progression for SONG_20M_POP_1_C_POPCHORDS, written in 4/4 time. The progression consists of 34 measures, with some measures marked as repeats (1A, 2, 3, 4, 5, 6, 7, 8, 9A, 10, 11, 12, 13, 14, 15, 16, 17A, 18, 19, 20, 21, 22, 23, 24, 25A, 26, 27, 28, 29, 30, 31, 32, 33A).

Measures 1-4: C, A-, F, G7

Measures 5-8: C, G7, A-, F

Measures 9-12: C, A-, F, G7, C, A-, F, G7

Measures 13-16: C, G7, A-, F, C, G7, A-, F

Measures 17-20: A-, D-, A-, A-

Measures 21-24: C, F, G

Measures 25-28: C, F, G, C

Measures 29-32: C

Measures 33-34: 33A END, 34

SONG 20M POP 1 E POP CHORDS

1A E C#- A B7

2

3

4

5 E B7 C#- A

6

7

8

9A E C#- A B7 E C#- A B7

10

11

12

13 E B7 C#- A E B7 C#- A

14

15

16

17A C#- F#-

18

19

20

21 G# C#-

22

23

24

25A E A B E

26

27

28

29 E A B E

30

31

32

33A END

34

SONG_20M_POP_1_G_POPCHORDS

1A G E- C D7

2

3

4

5 G E- C D7

6

7 G E- C D7

8

9A D7 E- C

10

11 G D7 E- C

12

13 E- A-

14

15

16

17A B E-

18

19

20

21 G C D

22

23

24

25A G C D G

26

27

28

29 G

30

31

32

33A END

34

SONG_20M_POP_2_A_POPCHORDS

Handwritten musical notation for measures 1-4. The key signature is A major (three sharps: F#, C#, G#) and the time signature is 4/4. The notation shows a treble clef, a whole note chord, and a double bar line at the end of each measure. The chords are: A (measure 1), Bb0 (measure 2), B- (measure 3), and E7 (measure 4). The measures are numbered 1A, 2, 3, and 4 below the staff.

Handwritten musical notation for measures 5-8. The notation shows a treble clef, a whole note chord, and a double bar line at the end of each measure. The chords are: A (measure 5), Bb0 (measure 6), B- (measure 7), and E7 (measure 8). The measures are numbered 5, 6, 7, and 8 below the staff.

Handwritten musical notation for measures 9-12. The notation shows a treble clef, a whole note chord, and a double bar line at the end of each measure. The chords are: A (measure 9), Esus (measure 10), Esus (measure 11), and Esus (measure 12). The measures are numbered 9A, 10, 11, and 12 below the staff.

Handwritten musical notation for measures 13-16. The notation shows a treble clef, a whole note chord, and a double bar line at the end of each measure. The chords are: F#- (measure 13), B- (measure 14), B- (measure 15), and C#7 (measure 16). The measures are numbered 13, 14, 15, and 16 below the staff.

Handwritten musical notation for measures 17-18. The notation shows a treble clef, a whole note chord, and a double bar line at the end of each measure. The chords are: F#- (measure 17) and F#- (measure 18). The measures are numbered 17A END and 18 below the staff.

SONG 20M_POP_2_C_POPCHORDS

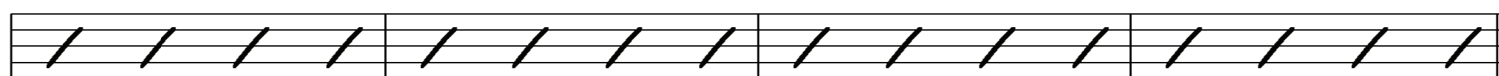
C C#o D- G7



1A 2 3 4

Detailed description: This block contains the first line of a musical score. It features a treble clef and a 4/4 time signature. Above the staff, the chords C, C#o, D-, and G7 are written above measures 1, 2, 3, and 4 respectively. The staff itself contains four measures, each filled with five diagonal slashes representing a whole note. Below the staff, the measure numbers 1A, 2, 3, and 4 are printed.


C C#o D- G7



5 6 7 8

Detailed description: This block contains the second line of a musical score. It features a treble clef and a 4/4 time signature. Above the staff, the chords C, C#o, D-, and G7 are written above measures 5, 6, 7, and 8 respectively. The staff itself contains four measures, each filled with five diagonal slashes representing a whole note. Below the staff, the measure numbers 5, 6, 7, and 8 are printed.


C Gsus



9A 10 11 12

Detailed description: This block contains the third line of a musical score. It features a treble clef and a 4/4 time signature. Above the staff, the chords C and Gsus are written above measures 9A and 10 respectively. The staff itself contains four measures, each filled with five diagonal slashes representing a whole note. Below the staff, the measure numbers 9A, 10, 11, and 12 are printed.

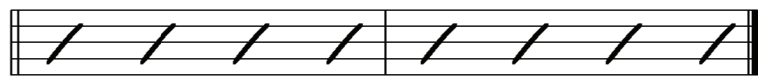
A- D- E7



13 14 15 16

Detailed description: This block contains the fourth line of a musical score. It features a treble clef and a 4/4 time signature. Above the staff, the chords A-, D-, and E7 are written above measures 13, 14, 15, and 16 respectively. The staff itself contains four measures, each filled with five diagonal slashes representing a whole note. Below the staff, the measure numbers 13, 14, 15, and 16 are printed.

A-



17A END 18

Detailed description: This block contains the fifth and final line of a musical score. It features a treble clef and a 4/4 time signature. Above the staff, the chord A- is written above measures 17 and 18. The staff itself contains two measures, each filled with five diagonal slashes representing a whole note. Below the staff, the measure numbers 17A END and 18 are printed.

SONG 20M POP 2 E POP CHORDS

Handwritten musical notation for measures 1A through 4. The key signature is three sharps (F#, C#, G#) and the time signature is 4/4. The chords are E, F0, F#-, and B7. The notation includes a treble clef, a key signature of three sharps, and a time signature of 4/4. The measures are labeled 1A, 2, 3, and 4.

Handwritten musical notation for measures 5 through 8. The chords are E, F0, F#-, and B7. The notation includes a treble clef, a key signature of three sharps, and a time signature of 4/4. The measures are labeled 5, 6, 7, and 8.

Handwritten musical notation for measures 9A through 12. The chords are E and Bsus. The notation includes a treble clef, a key signature of three sharps, and a time signature of 4/4. The measures are labeled 9A, 10, 11, and 12.

Handwritten musical notation for measures 13 through 16. The chords are C#-, F#-, and G#7. The notation includes a treble clef, a key signature of three sharps, and a time signature of 4/4. The measures are labeled 13, 14, 15, and 16.

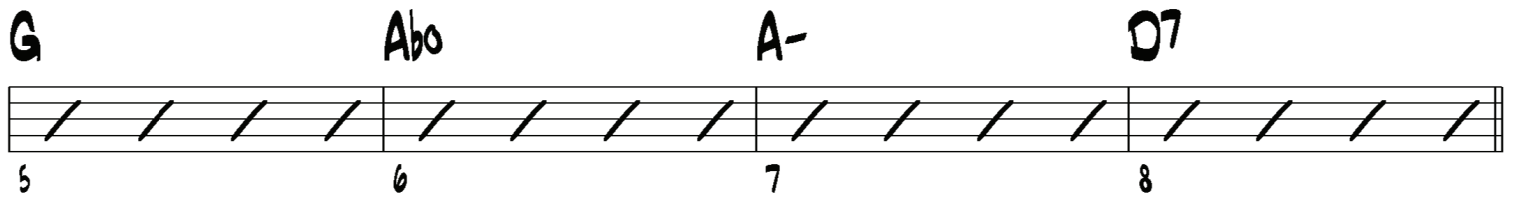
Handwritten musical notation for measures 17A and 18. The chord is C#-. The notation includes a treble clef, a key signature of three sharps, and a time signature of 4/4. The measures are labeled 17A END and 18.

SONG 20M POP 2 G POP CHORDS

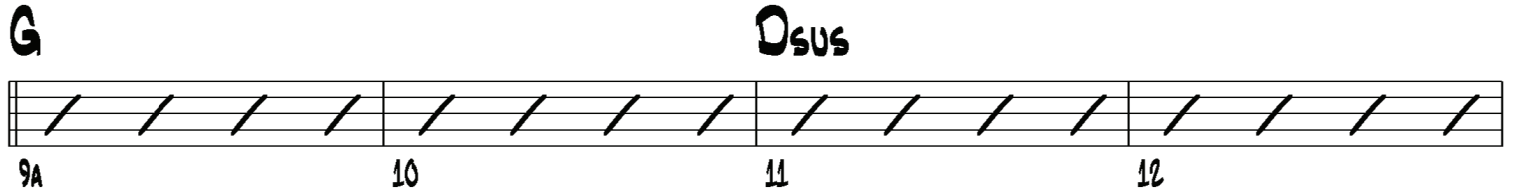
Handwritten musical notation for measures 1A through 4. The notation includes a treble clef, a key signature of one sharp (F#), and a 4/4 time signature. The notes are represented by diagonal slashes. Chords are indicated above the staff: G (measure 1A), Abo (measure 2), A- (measure 3), and D7 (measure 4).



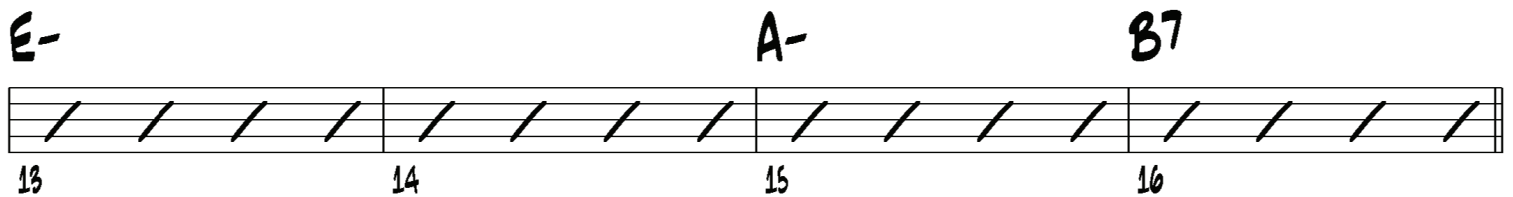
Handwritten musical notation for measures 5 through 8. The notes are represented by diagonal slashes. Chords are indicated above the staff: G (measure 5), Abo (measure 6), A- (measure 7), and D7 (measure 8).



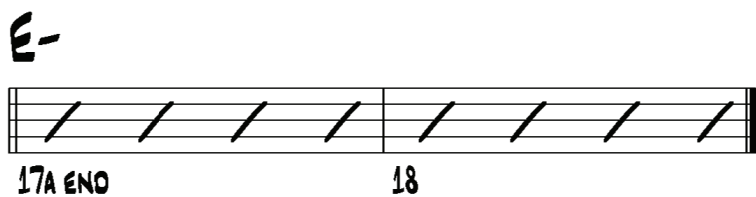
Handwritten musical notation for measures 9A through 12. The notes are represented by diagonal slashes. Chords are indicated above the staff: G (measure 9A) and Dsus (measure 11).



Handwritten musical notation for measures 13 through 16. The notes are represented by diagonal slashes. Chords are indicated above the staff: E- (measure 13), A- (measure 15), and B7 (measure 16).



Handwritten musical notation for measures 17A through 18. The notes are represented by diagonal slashes. Measure 17A is labeled "END".



SONG_20M_POP_3_A_LONGCHORDS

A

1A 2 3 4

A

5 6 7 8

B-

9A 10 11 12

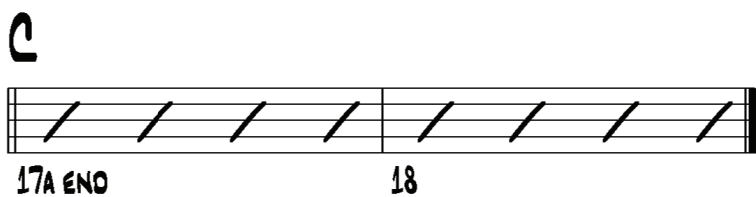
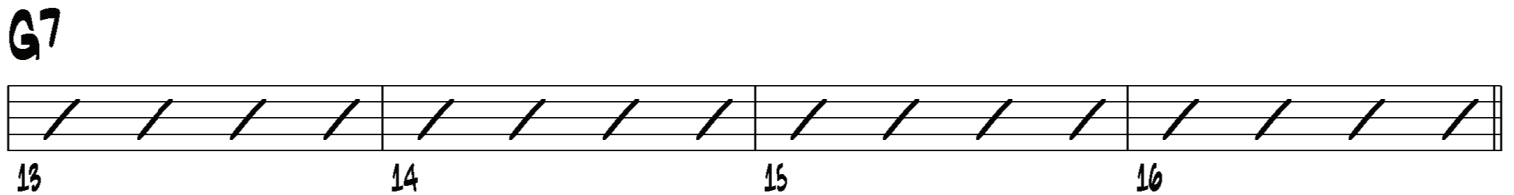
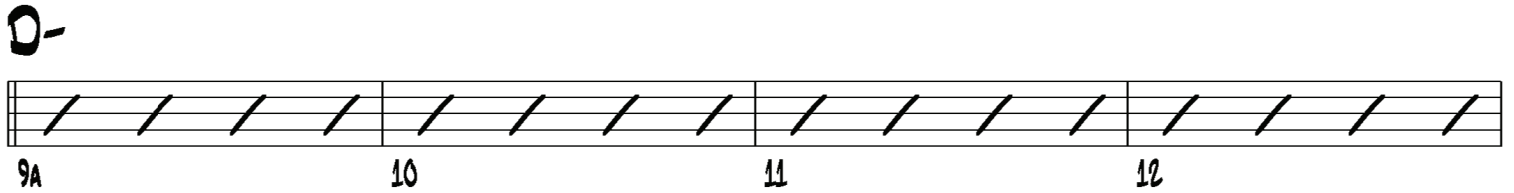
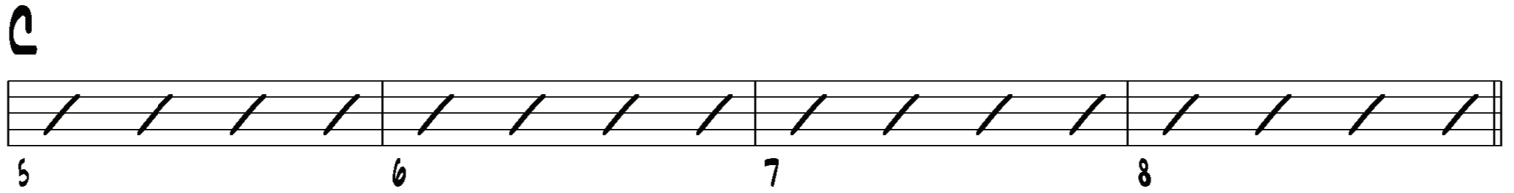
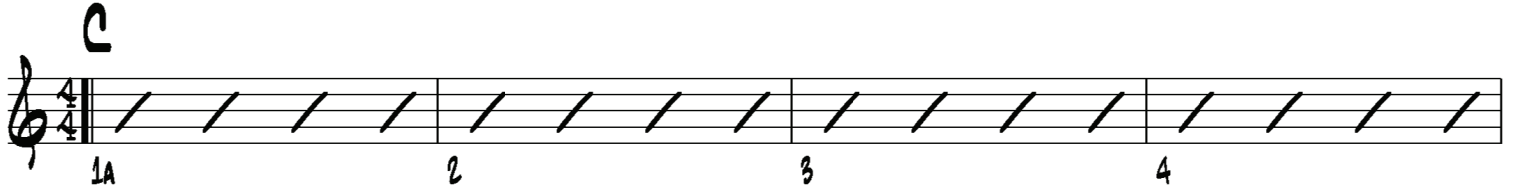
E7

13 14 15 16

A

17A END 18

SONG_20M_POP_3_C_LONGCHORDS



SONG_20M_POP_3_E_LONGCHORDS

E

1A 2 3 4

E

5 6 7 8

F#-

9A 10 11 12

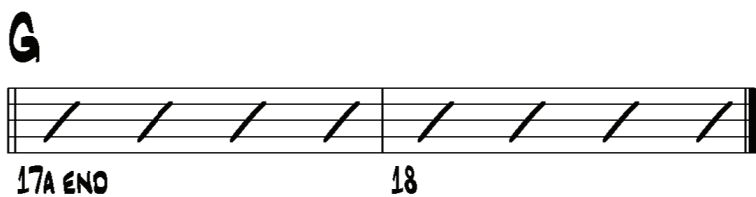
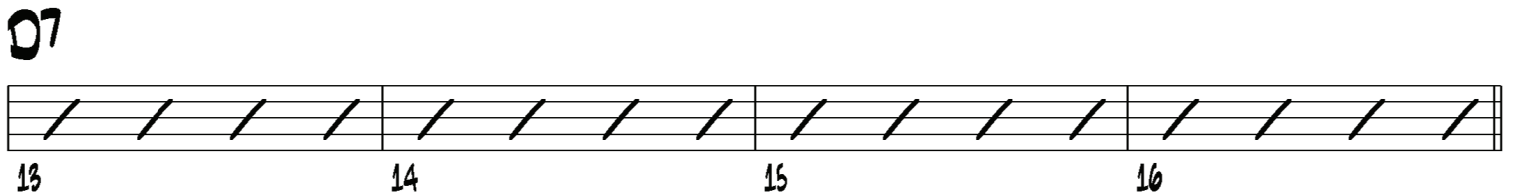
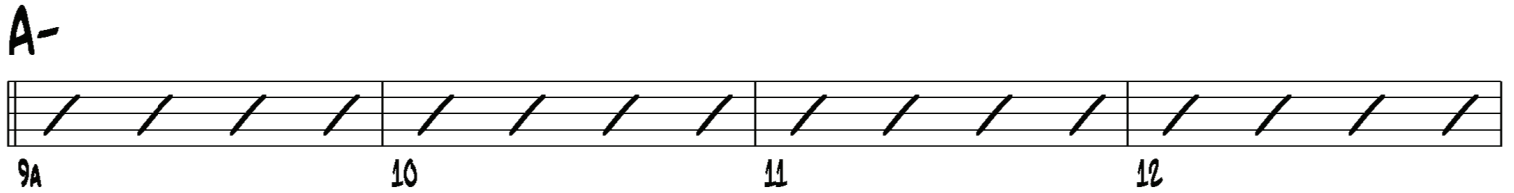
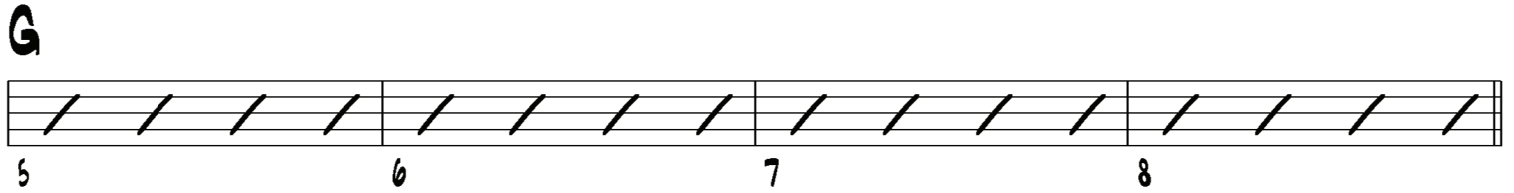
B7

13 14 15 16

E

17A END 18

SONG_20M_POP_3_G_LONGCHORDS



SONG 20M POP 4 A MORE POP CHORDS

Chord progression for SONG 20M POP 4 A MORE POP CHORDS. The key signature is A major (two sharps: F# and C#). The progression consists of 34 measures, with some measures containing multiple chords.

Measures and Chords:

- 1A: A
- 2: F#-
- 3: D
- 4: E7
- 5: F#-
- 6: B-
- 7: E7
- 8: F#-
- 9A: A
- 10: Asus
- 11: A
- 12: E7
- 13: A
- 14: C#-
- 15: F#-
- 16: D E7
- 17A: A
- 18: C#7
- 19: F#-
- 20: E7
- 21: F#-
- 22: E7
- 23: D
- 24: (empty)
- 25A: F#-
- 26: E7
- 27: A
- 28: E7
- 29: A
- 30: (empty)
- 31: (empty)
- 32: (empty)
- 33A: END
- 34: (empty)

SONG 20M POP 4 C MORE POP CHORDS

Chord progression for SONG 20M POP 4 C MORE POP CHORDS. The progression is written in 4/4 time, starting with a treble clef and a key signature of one flat (Bb).

The chords and their positions are as follows:

- 1A: C
- 2: A-
- 3: F
- 4: G7
- 5: A-
- 6: D-
- 7: G7
- 8: A-
- 9A: C
- 10: C#0
- 11: C
- 12: G7
- 13: C
- 14: E-
- 15: A-
- 16: F G7
- 17A: C
- 18: E7
- 19: A-
- 20: G7
- 21: A-
- 22: G7
- 23: F
- 24: (empty)
- 25A: A-
- 26: G7
- 27: C
- 28: G7
- 29: C
- 30: (empty)
- 31: (empty)
- 32: (empty)
- 33A: END
- 34: (empty)

SONG_20M_POP_4_E_MOREPOPCHORDS

Chord progression for SONG_20M_POP_4_E_MOREPOPCHORDS, written in 4/4 time with a key signature of three sharps (F#, C#, G#).

The progression consists of 34 measures, organized into 8 systems of 4 measures each. Chords are indicated above the staff lines, and measure numbers are provided below the staff lines.

Chord progression:

- Measure 1: E
- Measure 2: C#-
- Measure 3: A
- Measure 4: B7
- Measure 5: E
- Measure 6: F#-
- Measure 7: B7
- Measure 8: B7
- Measure 9: C#-
- Measure 10: F#-
- Measure 11: B7
- Measure 12: C#-
- Measure 13: E
- Measure 14: E sus
- Measure 15: E
- Measure 16: B7
- Measure 17: E
- Measure 18: G#-
- Measure 19: C#-
- Measure 20: A B7
- Measure 21: E
- Measure 22: G#7
- Measure 23: C#-
- Measure 24: B7
- Measure 25: C#-
- Measure 26: B7
- Measure 27: E
- Measure 28: B7
- Measure 29: E
- Measure 30: E
- Measure 31: E
- Measure 32: E
- Measure 33: E
- Measure 34: E

Measure numbers: 1A, 2, 3, 4, 5, 6, 7, 8, 9A, 10, 11, 12, 13, 14, 15, 16, 17A, 18, 19, 20, 21, 22, 23, 24, 25A, 26, 27, 28, 29, 30, 31, 32, 33A, 34.

SONG 20M_POP_4_G_MOREPOPCHORDS

Handwritten guitar chord notation for a song in G major, 4/4 time. The notation is organized into measures, with measures 1A through 34A marked. The chords are as follows:

Measure	Chord
1A	G
2	E-
3	C
4	D7
5	G
6	Abo
7	A-
8	D7
9A	E-
10	A-
11	D7
12	E-
13	G
14	Gsus
15	G
16	D7
17A	G
18	B-
19	E-
20	C D7
21	G
22	B7
23	E-
24	D7
25A	E-
26	D7
27	G
28	D7
29	G
30	
31	
32	
33A	END
34	

SONG_20M_POP_5_FANCYCHORDS

Handwritten musical notation for a 36-measure piece, organized into 9 measures per system (4 measures per line). The notation includes a treble clef, a 4/4 time signature, and various chords and melodic lines.

Measure 1: Treble clef, 4/4 time signature. Chord: C^{AUG}. Melody: / / / /

Measure 2: Chord: C². Melody: / / / /

Measure 3: Chord: C². Melody: / / / /

Measure 4: Chord: C². Melody: / / / /

Measure 5: Chord: C^{ADD2}. Melody: / / / /

Measure 6: Chord: C^{ADD2}. Melody: / / / /

Measure 7: Chord: C^{Δ7}. Melody: / / / /

Measure 8: Chord: C^{Δ7}. Melody: / / / /

Measure 9: Chord: C⁶. Melody: / / / /

Measure 10: Chord: C⁶. Melody: / / / /

Measure 11: Chord: C⁻⁷. Melody: / / / /

Measure 12: Chord: C⁻⁷. Melody: / / / /

Measure 13: Chord: C⁶. Melody: / / / /

Measure 14: Chord: C⁶. Melody: / / / /

Measure 15: Chord: C⁻⁷. Melody: / / / /

Measure 16: Chord: C⁻⁷. Melody: / / / /

Measure 17: Chord: C⁶. Melody: / / / /

Measure 18: Chord: C⁶. Melody: / / / /

Measure 19: Chord: C^{Δ9}. Melody: / / / /

Measure 20: Chord: C^{Δ9}. Melody: / / / /

Measure 21: Chord: C⁶. Melody: / / / /

Measure 22: Chord: C⁶. Melody: / / / /

Measure 23: Chord: C^{Δ9}. Melody: / / / /

Measure 24: Chord: C^{Δ9}. Melody: / / / /

Measure 25: Chord: C⁻⁹. Melody: / / / /

Measure 26: Chord: C⁻⁹. Melody: / / / /

Measure 27: Chord: C⁻¹¹. Melody: / / / /

Measure 28: Chord: C⁻¹¹. Melody: / / / /

Measure 29: Chord: C⁻⁹. Melody: / / / /

Measure 30: Chord: C⁻⁹. Melody: / / / /

Measure 31: Chord: C⁻¹¹. Melody: / / / /

Measure 32: Chord: C⁻¹¹. Melody: / / / /


Measure 33: Chord: C^{AUG}. Melody: / / / /

Measure 34: Chord: C^{AUG}. Melody: / / / /

Measure 35: Chord: C². Melody: / / / /

Measure 36: Chord: C². Melody: / / / /

E ϕ 7 **E-6**



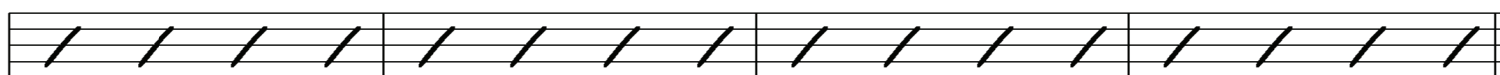
37 38 39 40

E9 **E Δ 9**



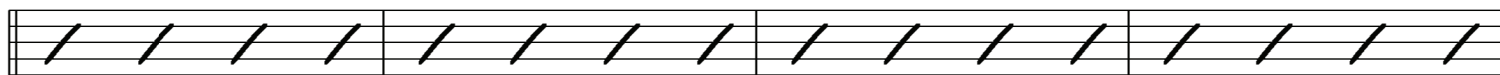
41A 42 43 44

E-9 **E-11**



45 46 47 48

E_{AUG} **E²**



49A 50 51 52

E_{ADD2} **E Δ 7**



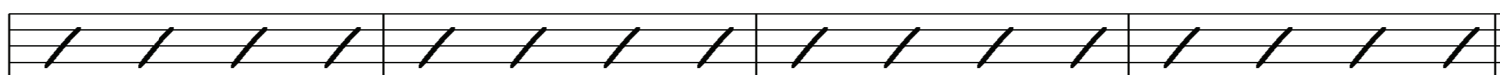
53 54 55 56

E6 **E-7**



57A 58 59 60

E ϕ 7 **E-6**



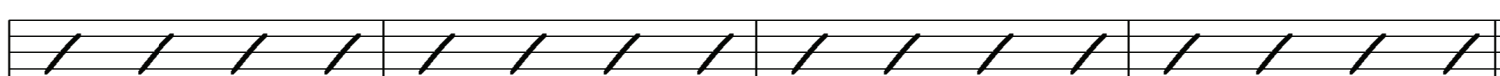
61 62 63 64

G9 **G Δ 9**



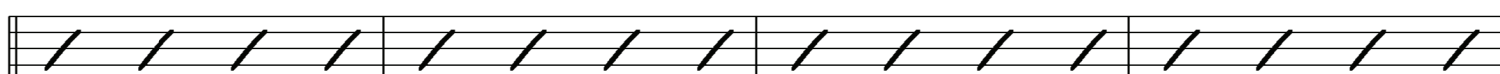
65A 66 67 68

G-9 **G-11**



69 70 71 72

G_{AUG} **G²**



73A 74 75 76

Handwritten musical notation for guitar chords across 11 measures (77-116). The notation includes a treble clef and a key signature of one sharp (F#). The chords are written in a stylized, handwritten font.

Measures and Chords:

- Measure 77: **Gadd2**
- Measure 78: **G6**
- Measure 79: **GΔ7**
- Measure 80: **G-7**
- Measure 81A: **GΔ7**
- Measure 82: **G-6**
- Measure 83: **G9**
- Measure 84: **GΔ9**
- Measure 85: **G-9**
- Measure 86: **G-11**
- Measure 87: **A9**
- Measure 88: **AΔ9**
- Measure 89A: **A-9**
- Measure 90: **A-11**
- Measure 91: **A9**
- Measure 92: **AΔ9**
- Measure 93: **A-9**
- Measure 94: **A-11**
- Measure 95: **A9**
- Measure 96: **AΔ9**
- Measure 97A: **A-9**
- Measure 98: **A-11**
- Measure 99: **A9**
- Measure 100: **AΔ9**
- Measure 101: **A9**
- Measure 102: **AΔ9**
- Measure 103: **A9**
- Measure 104: **AΔ9**
- Measure 105A: **Aadd2**
- Measure 106: **A6**
- Measure 107: **AΔ7**
- Measure 108: **A-7**
- Measure 109: **A6**
- Measure 110: **A-7**
- Measure 111: **A6**
- Measure 112: **A-7**
- Measure 113A: **A6**
- Measure 114: **A-7**
- Measure 115: **A6**
- Measure 116: **A-7**

Handwritten musical notation for guitar chords across four systems. Each system contains a staff with four measures of slanted lines representing chords. Measure numbers are written below the staff, and chord names are written above the staff.

System 1:

- Measure 117: $A\delta^7$
- Measure 118: (no label)
- Measure 119: $A-6$
- Measure 120: (no label)

System 2:

- Measure 121A: A^9
- Measure 122: (no label)
- Measure 123: $A\Delta^9$
- Measure 124: (no label)

System 3:

- Measure 125: $A-9$
- Measure 126: (no label)
- Measure 127: $A-11$
- Measure 128: (no label)

System 4:

- Measure 129A: $A-$
- Measure 130: (no label)